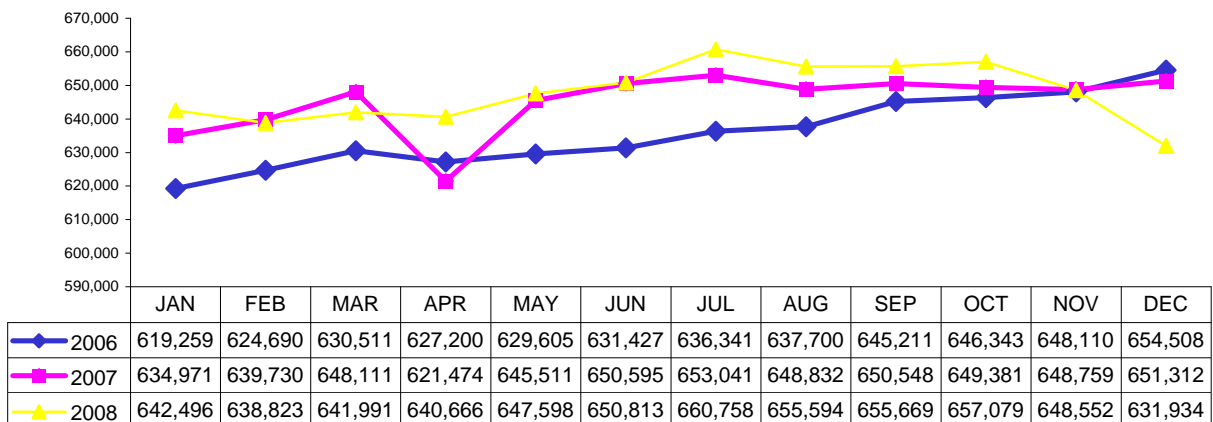


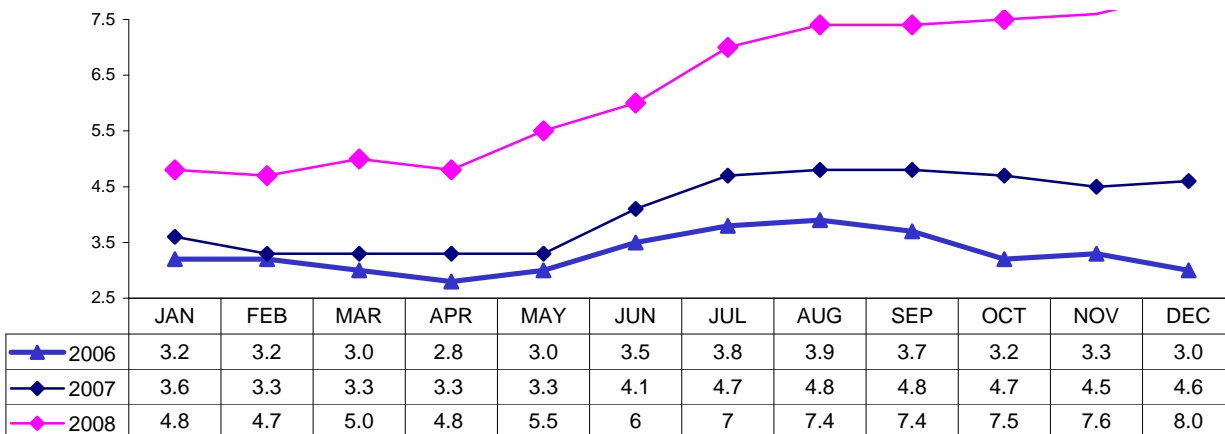
Palm Beach County Market Indicators



Palm Beach County Labor Force

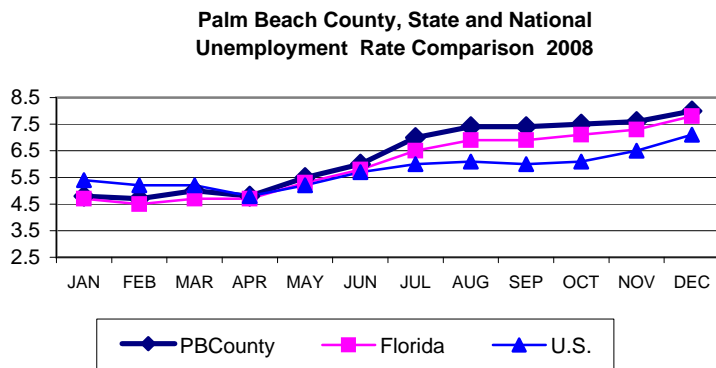


Palm Beach County Unemployment Rates



Source: Labor Market Statistics, Florida Agency for Workforce Innovation

2008 County, State & U.S. Unemployment Rate Comparison



2008	PBC	Florida	U.S.
JAN	4.8	4.7	5.4
FEB	4.7	4.5	5.2
MAR	5.0	4.7	5.2
APR	4.8	4.7	4.8
MAY	5.5	5.3	5.2
JUN	6.0	5.8	5.7
JUL	7.0	6.5	6.0
AUG	7.4	6.9	6.1
SEP	7.4	6.9	6.0
OCT	7.5	7.1	6.1
NOV	7.6	7.3	6.5
DEC	8.0	7.8	7.1

Sources: US Bureau of Labor Statistics and Florida Agency for Workforce Innovation

Palm Beach County Market Indicators



Palm Beach County Occupational Licenses

	# sold			# sold	
	2007	2008		2007	2008
January	1,499	1,091	July	968	1,031
February	1,300	1,135	August	1,170	898
March	1,369	1,095	September	1,145	1,325
April	1,356	1,235	October	1,660	1,292
May	1,296	1,048	November	1,126	881
June	1,110	918	December	929	885

Source: Palm Beach County Tax Collectors Office

Cost of Living

West Palm Beach-Boca Raton-
Boynton Beach FL Metro Div.

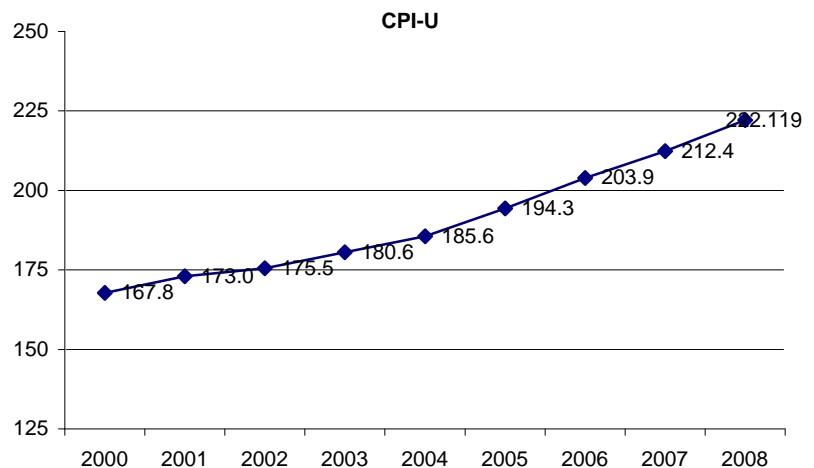
	100%	13%	29%	10%	9%	4%	35%
	COMPOSITE	GROCERY	HOUSING	UTILITIES	TRANS- PORTATION	HEALTH CARE	MISC. GOODS & SERVICES
Index Avg	INDEX	ITEMS	HOUSING	UTILITIES	PORTATION	CARE	& SERVICES
2006Q2-2007Q1	117.5	109.2	143.0	96.2	109.3	113.0	109.2

Source: ACCRA Cost of Living Index, 2007Q1

Consumer Price Index

Miami-Ft. Lauderdale-Miami Beach-Kendall MSA

Year	Annual
1996	153.7
1997	158.4
1998	160.5
1999	162.4
2000	167.8
2001	173.0
2002	175.5
2003	180.6
2004	185.6
2005	194.3
2006	203.9
2007	212.4
2008	222.119



Source: U.S. Bureau of Labor Statistics, CPI-U MSA

Palm Beach County Market Indicators



Palm Beach County Building Permit Activity

2007		1Q	2Q	3Q	4Q	YR END
Single Family		538	536	538	398	2,010
Multi Family		224	448	213	107	992
Value		\$185,459,141	\$244,751,987	\$230,301,045	\$200,185,610	\$860,697,783
2008						
Single Family		401	297	310	167	1,175
Multi Family		170	24	38	99	331
Value		\$141,995,193	\$118,482,229	\$114,862,660	\$82,420,968	\$457,761,050

Source: Palm Beach County Planning & Zoning Department

Palm Beach County Monthly Sales Tax

2008	Gross Sales	Taxable Sales	State Sales Tax
January	\$5,813,106,077	\$2,410,820,273	\$142,353,153
February	\$3,986,537,638	\$2,007,465,974	\$121,663,432
March	\$3,832,633,397	\$1,983,309,578	\$122,891,154
April	\$4,330,161,115	\$2,155,098,473	\$132,157,967
May	\$3,765,593,735	\$1,985,842,448	\$120,055,899
June	\$3,540,789,783	\$1,826,842,731	\$112,028,626
July	\$3,983,189,095	\$1,661,067,832	\$99,586,432
August	\$3,166,566,339	\$1,552,721,059	\$94,122,698
September	\$3,150,373,483	\$1,628,766,443	\$97,602,308
October	\$3,580,249,205	\$1,594,354,184	\$97,336,365
November	\$3,128,639,445	\$1,584,145,259	\$98,153,824
December	\$3,028,053,185	\$1,662,298,056	\$104,701,429
Total	\$76,979,507,881	\$37,703,868,797	\$2,298,398,836

Source: Florida Dept. of Revenue, Florida Sales Tax Return Data, Monthly Statistics, CY07

1999-2007 Palm Beach County Sales Tax

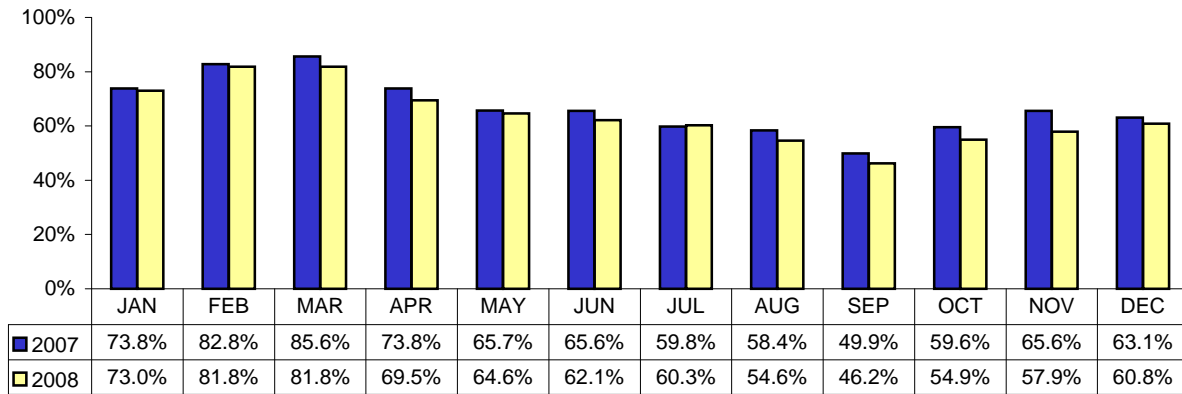
Year	Gross Sales	Taxable Sales	State Sales Tax
2007	\$48,300,595,755	\$24,428,194,061	\$1,495,840,956
2006	\$44,181,171,218	\$25,250,623,960	\$1,564,097,810
2005	\$43,825,268,946	\$23,922,420,866	\$1,475,522,177
2004	\$39,203,829,972	\$20,600,093,647	\$1,210,627,866
2003	\$37,268,700,910	\$19,366,827,496	\$1,144,547,896
2002	\$34,608,729,397	\$18,186,732,536	\$1,113,637,655
2001	\$34,994,715,333	\$18,533,126,417	\$1,137,240,042
2000	\$34,393,336,408	\$17,979,044,459	\$1,102,943,624
1999	\$30,213,935,156	\$16,692,230,959	\$1,025,692,885

Source: Florida Dept. of Revenue, Florida Sales Tax Return Data, Annual Statistics

Palm Beach County Market Indicators

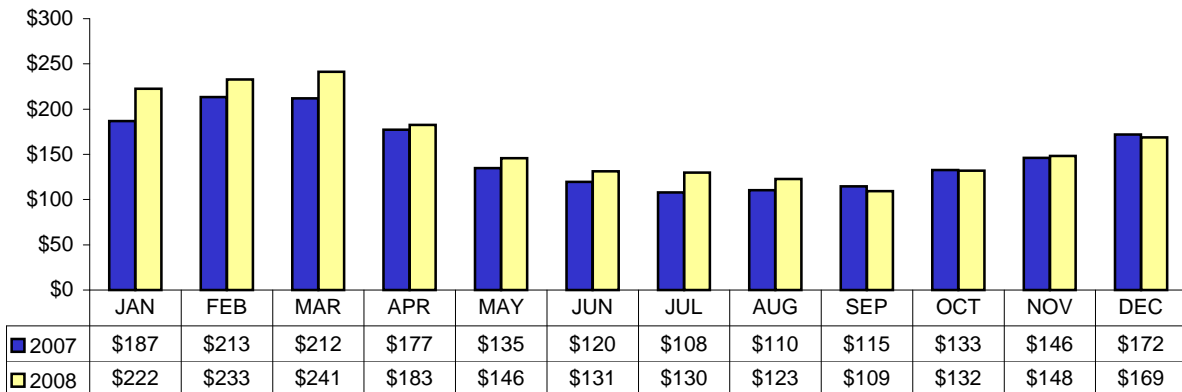


Palm Beach County Occupancy Rates - Visitor Statistics



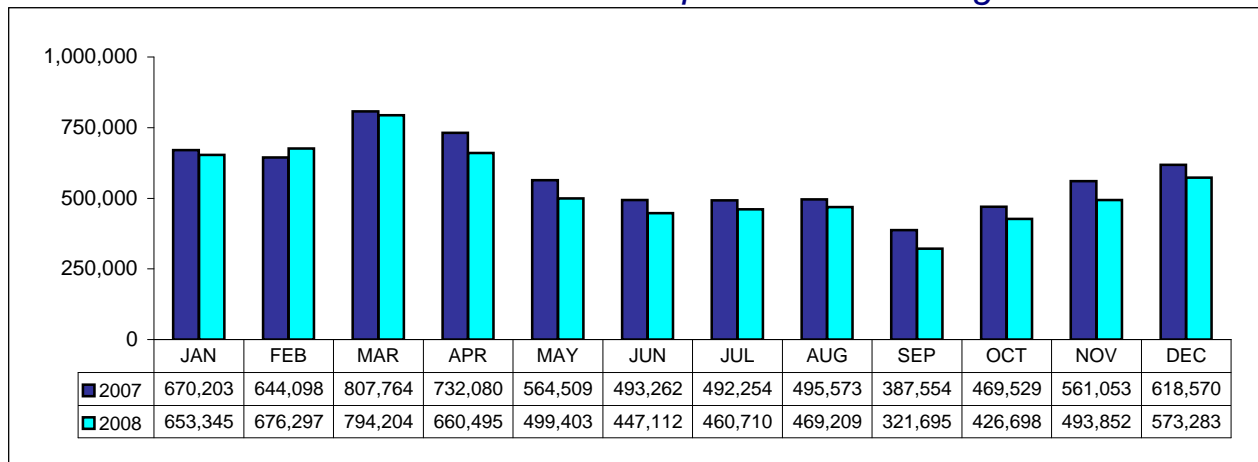
Source: Palm Beach County Tourist Development Council

Palm Beach County Avg. Room Rate - Visitor Statistics



Source: Palm Beach County Tourist Development Council

Palm Beach International Airport Total Passengers



Source: Palm Beach International Airport