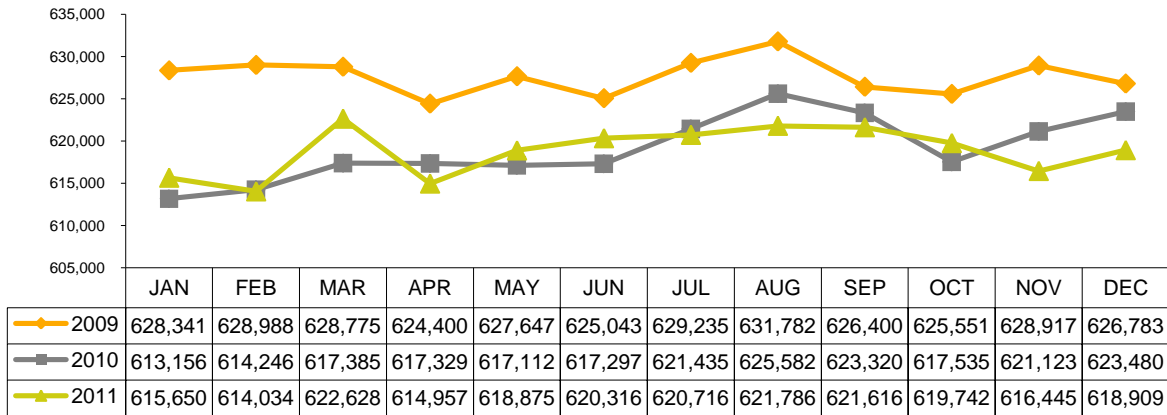


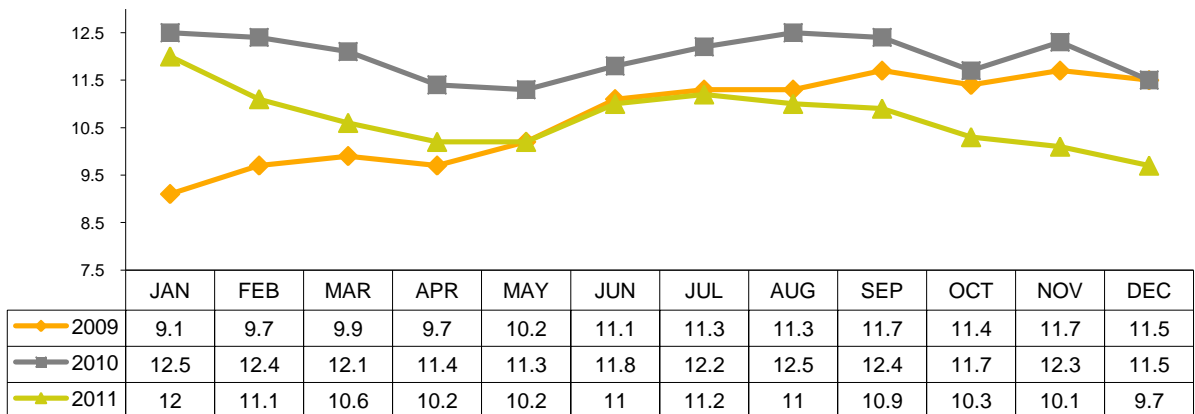
# Palm Beach County Market Indicators



## Palm Beach County Labor Force

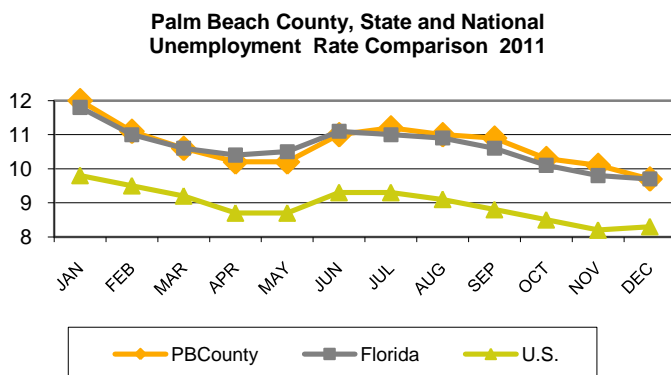


## Palm Beach County Unemployment Rates



Source: Local Area Unemployment Statistics, Florida Department of Economic Opportunity

## 2011 County, State & U.S. Unemployment Rate Comparison



2011	PBC	Florida	U.S.
JAN	12	11.8	9.8
FEB	11.1	11	9.5
MAR	10.6	10.6	9.2
APR	10.2	10.4	8.7
MAY	10.2	10.5	8.7
JUN	11	11.1	9.3
JUL	11.2	11	9.3
AUG	11	10.9	9.1
SEP	10.9	10.6	8.8
OCT	10.3	10.1	8.5
NOV	10.1	9.8	8.2
DEC	9.7	9.7	8.3

Source: Local Area Unemployment Statistics, Florida Department of Economic Opportunity

# Palm Beach County Market Indicators



## Palm Beach County Occupational Licenses

	# sold			# sold	
	2010	2011		2010	2011
January	903	↓ *529	July	577	↓ 488
February	407	↑ 544	August	716	↓ *447
March	911	↓ 591	September	1,047	↓ 606
April	730	↑ 590	October	923	↓ *704
May	558	↓ 526	November	628	↑ 658
June	694	↓ 548	December	573	↓ 547

Source: Palm Beach County Tax Collectors Office

\*Note: Incomplete Data for the month

## Cost of Living

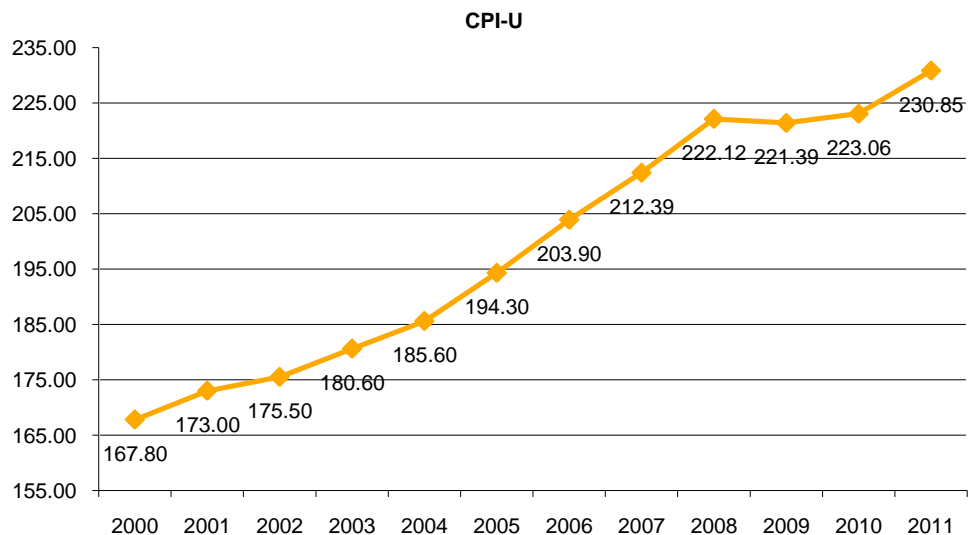
West Palm Beach-Boca Raton- Boynton Beach FL Metro Div.	100%	13%	29%	10%	9%	4%	35%
	COMPOSITE INDEX	GROCERY ITEMS	HOUSING	UTILITIES	TRANS-PORTATION	HEALTH CARE	MISC. GOODS & SERVICES
	Index Avg 2006Q2-2007Q1	117.5	109.2	143.0	96.2	109.3	113.0

Source: ACCRA Cost of Living Index, 2007Q1\* (most recent available)

## Consumer Price Index

Miami-Ft. Lauderdale

Year	Annual
1997	158.40
1998	160.50
1999	162.40
2000	167.80
2001	173.00
2002	175.50
2003	180.60
2004	185.60
2005	194.30
2006	203.90
2007	212.39
2008	222.12
2009	221.39
2010	223.06
2011	230.85



Source: U.S. Bureau of Labor Statistics, CPI-U

# Palm Beach County Market Indicators



## Palm Beach County Building Permit Activity

2010	1Q	2Q	3Q	4Q	YR END
Single Family	347	309	329	230	1,215
Multi Family	48	59	158	40	305
Value	\$126,160,034	\$116,561,780	\$119,476,377	\$77,818,591	\$440,016,782
2011	1Q	2Q	3Q	4Q	YR END
Single Family	316	476	480	561	1,833
Multi Family	10	11	20	458	499
Value	\$113,726,375	\$171,575,774	\$191,891,200	\$191,975,826	\$669,169,175

Source: Palm Beach County Planning & Zoning Department

## Palm Beach County Monthly Sales Tax

2011	Gross Sales	Taxable Sales	State Sales Tax
January	\$5,437,673,110	\$2,107,071,931	\$122,379,934
February	\$3,359,091,378	\$1,700,097,565	\$104,295,371
March	\$3,411,562,986	\$1,759,681,758	\$107,977,998
April	\$4,201,683,339	\$1,955,430,434	\$118,644,975
May	\$3,434,173,980	\$1,764,258,437	\$106,213,401
June	\$3,367,875,080	\$1,642,146,575	\$100,062,510
July	\$3,963,451,991	\$1,585,021,081	\$95,469,377
August	\$3,058,970,397	\$1,484,847,776	\$91,100,668
September	\$3,140,662,073	\$1,554,081,726	\$93,009,120
October	\$3,713,279,140	\$1,606,497,036	\$98,018,910
November	\$3,260,663,708	\$1,608,435,822	\$99,639,375
December	\$3,442,445,379	\$1,781,504,294	\$110,069,337
<b>Total</b>	<b>\$43,791,532,561</b>	<b>\$20,549,074,435</b>	<b>\$1,246,880,977</b>

Source: Florida Dept. of Revenue, Florida Sales Tax Return Data, Monthly Statistics, CY10-11

## 2000-2011 Palm Beach County Sales Tax

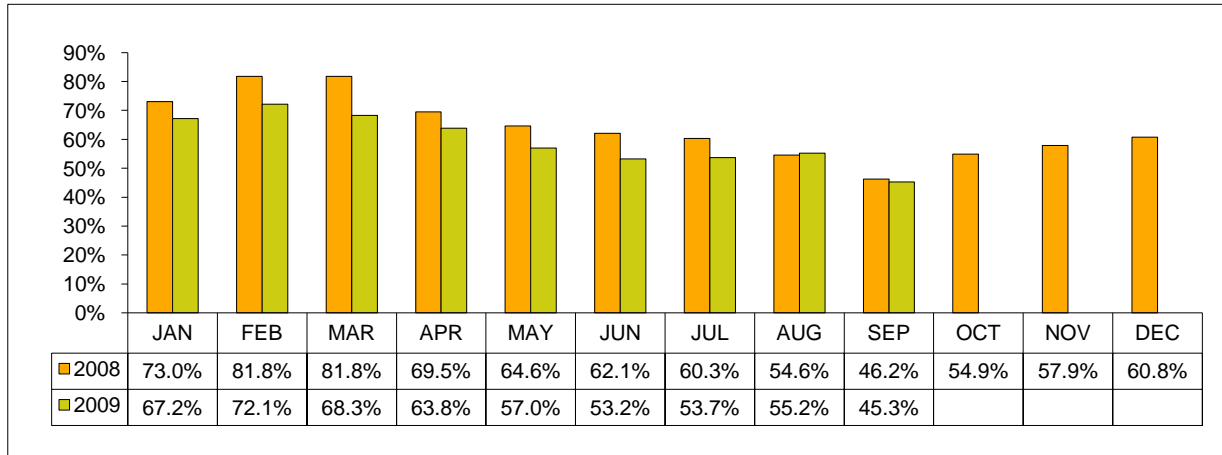
Year	Gross Sales	Taxable Sales	State Sales Tax
2011	\$42,791,532,561	\$20,549,074,435	\$1,246,880,977
2010	\$40,842,901,958	\$19,715,358,048	\$1,191,129,389
2009	\$40,636,197,730	\$19,327,079,838	\$1,162,699,284
2008	\$45,305,892,497	\$22,052,732,311	\$1,342,653,288
2007	\$48,300,595,755	\$24,428,194,061	\$1,495,840,956
2006	\$44,181,171,218	\$25,250,623,960	\$1,564,097,810
2005	\$43,825,268,946	\$23,922,420,866	\$1,475,522,177
2004	\$39,203,829,972	\$20,600,093,647	\$1,210,627,866
2003	\$37,268,700,910	\$19,366,827,496	\$1,144,547,896
2002	\$34,608,729,397	\$18,186,732,536	\$1,113,637,655
2001	\$34,994,715,333	\$18,533,126,417	\$1,137,240,042
2000	\$34,393,336,408	\$17,979,044,459	\$1,102,943,624

Source: Florida Dept. of Revenue, Florida Sales Tax Return Data, Annual Statistics

# Palm Beach County Market Indicators

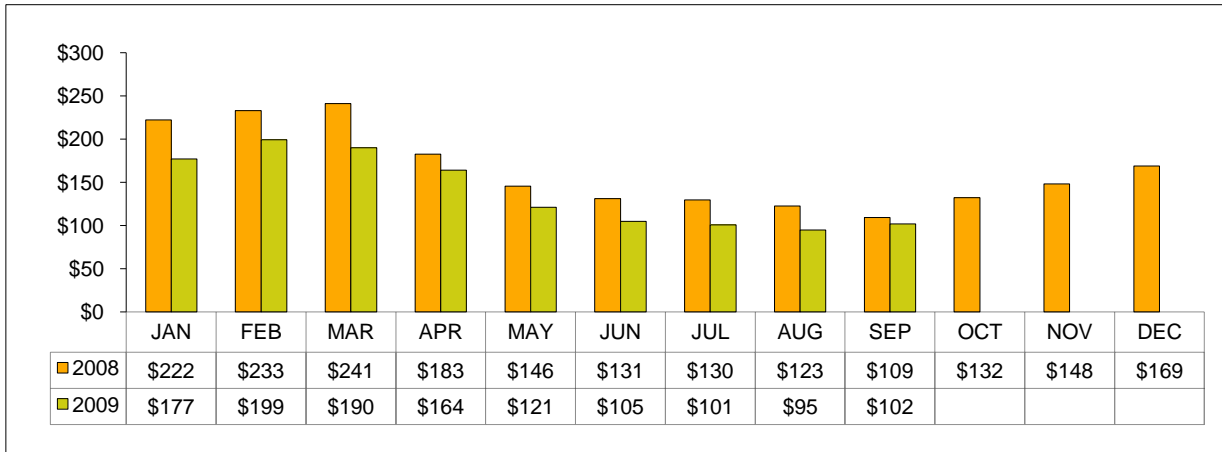


## Palm Beach County Occupancy Rates - Visitor Statistics



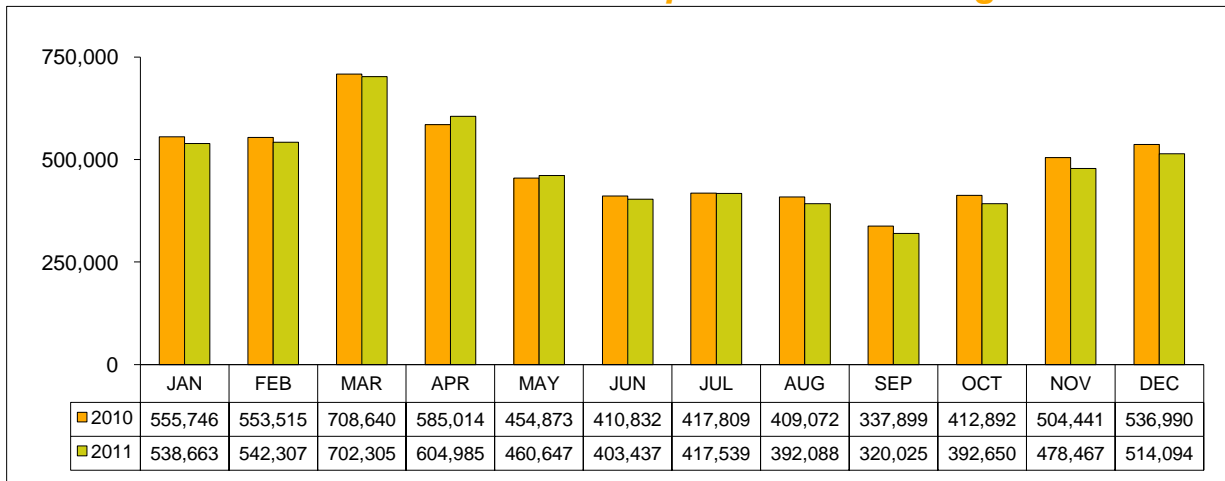
Source: Palm Beach County Tourist Development Council  
 Note: Oct - Dec 2009 not reported; 2010 & 2011 not reported

## Palm Beach County Avg. Room Rate - Visitor Statistics



Source: Palm Beach County Tourist Development Council  
 Note: Oct - Dec 2009 not reported; 2010 & 2011 not reported

## Palm Beach International Airport Total Passengers



Source: Palm Beach International Airport